

TREE PLOTS ALONG AN ALTITUDINAL TRANSECT - YUS CONSERVATION AREA, MOROBE PROVINCE

Workshop on Payments for Environmental Services (PES) and REDD+,
Forest Conservation and Resource Management and Monitoring, Land
Management and SABLs

7-8 Feb, 2012. Kokoda Track Motel

Bega Inaho and Banak Gamui
Papua New Guinea Institute of Biological Research

Papua New Guinea Institute of Biological Research Inc. (PNGIBR)



- National NGO
- Formed to ensure a biological sustainable future for PNG
- Capacity Building
- Research
- Conservation

PNGIBR Projects



- Hunting
- Nest Box
- Hogave Biodiversity Monitoring
- Mt. Gahavisuka Biodiversity Monitoring
- Manus Frog
- Echidna
- YUS tree plot
- Bio-culture
- Others

YUS Tree plot Project



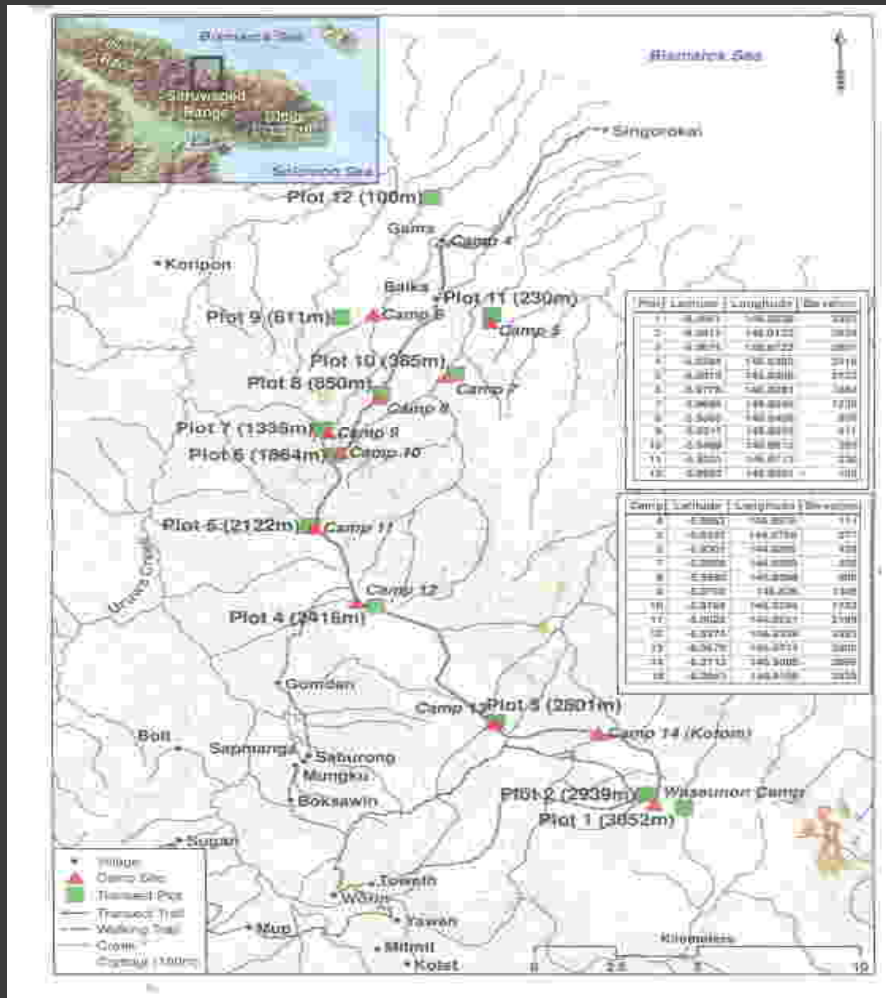
Aims

Understand the forest structure and composition along altitudinal gradient

Long Term Monitoring to understand forest dynamics and effects of climate change

Create Employment for land owners

YUS tree plot project



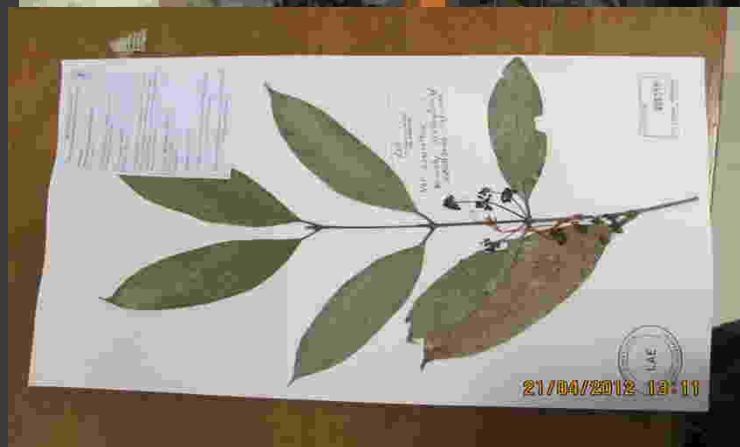
- YUS Conservation Area Morobe Province, PNG
- Accessibility – planes/boats/walk
- 11 one hectare plots (100 – 3050 m a.s.l)

Data Collected



- Forest Structure (tree dbh, height, stem density, life forms)
- Forest Composition (species list – scientific and local names)
- Fertile specimen (photos)
- Phenology

Project Output



- Land Owners Trained to be semi-professional field assistants
- Honours Thesis
- Large Data on Forest Composition and Structure along an altitudinal gradient
- Fertile tree specimen

Importance of Project



- Permanent plots
- Supports Land Owners
- Important data source in forest structure, composition, carbon stock etc...
- Phenology to understand climate change effects
- Contributes to forest data deficiency in PNG.

Obstacles



- Logistics
- Land owner misunderstandings
- Funding



Conclusion

- ⦿ GIS data – how reliable?
- ⦿ How accurate can we be by extrapolating from other tropical countries
- ⦿ More dirty field work needs to be done to understand and make decisions on our Forest Ecosystems

Acknowledgement

- ⦿ Conservation International
- ⦿ Tree Kangaroo Conservation Project
- ⦿ James Cook University
- ⦿ FRI
- ⦿ Rigel Jensen, Stephen Mcena and Wendy Cooper
- ⦿ Land Owners

Thank You !!

